

# Maintainer

## 10000 Series Crane

### Features

- 10,000 lb. maximum lift capacity
- 8,333 lb. lift capacity @ 6' from center line of rotation
- 24 feet hydraulic reach
- 615 degrees of rotation
- Hexagonal boom design
- Tall tower crane pedestal design (short tower optional)
- Closed center/load sensing hydraulics (open center optional)
- Quick change load block for single part line use
- Compact Anti-two-block design

**Meets OSHA  
1910.180  
requirements and  
ANSI B30.5 safety  
standards**



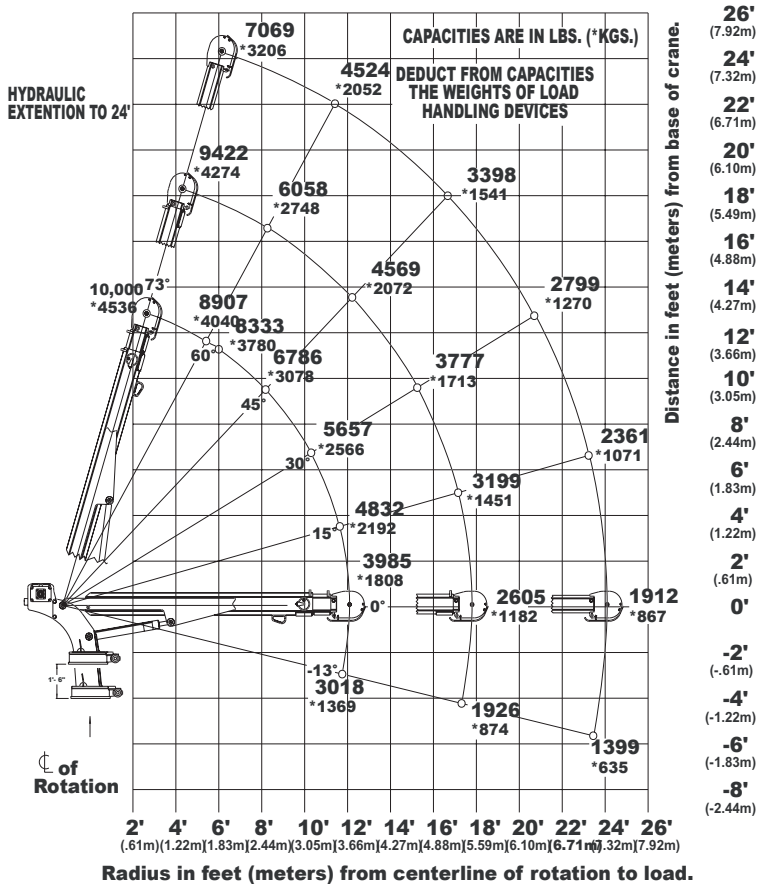
1  
0  
0  
0  
0  
C  
R  
A  
N  
E



## 10000 SERIES CRANE CAPACITY CHART

58600 FT\*LB  
CRANE RATING

MAX SINGLE LINE CAPACITY IS 5000 LBS (2268 KG)  
FOR GREATER LOADS USE 2 PART LINE



Maintainer

1701 S 2ND AVE SHELDON, IA 51201  
800-831-8588  
WWW.MAINTAINER.COM

### Winch:

- 38:1 Ratio worm gear winch with brake (standard), 30 feet/min line speed, single
- 40.5:1 Ratio planetary winch with brake (optional) 60 feet/min line speed, single
- Equipped with 120' of 3/8" cable
- ANSI winch drum
- Hydraulic high torque winch motor

### Rotation:

- Turntable slewing ring bearing
- Self-locking modular worm drive with spur gear output, 190.4:1 ratio
- Hydraulic rotation powered by a high torque motor
- 615 Degrees of hydraulic rotation

### Crane Physical Specifications

- 60.5" Overall crane height
- Wt. 2075 lbs. (941 KGS.)
- 22" x 22" Mounting space required
- Mounting requires eight (8) 7/8-9 (GRD -8) bolts
- Hydraulic requirements 10-12 GPM@3000 PSI

### Optional Equipment:

- Wireless remote control, (plug & play)
- Planetary winch, (bolt on change out)

**Maintainer**  
Corporation of Iowa, Inc

Call for the dealer nearest you at 800.831.8588  
or on the web at [www.maintainer.com](http://www.maintainer.com)